

YEAR

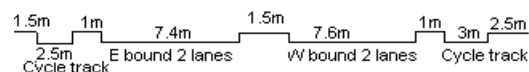
2015

LINK

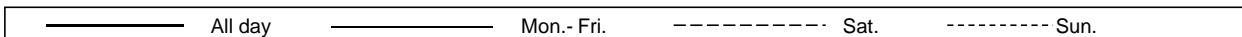
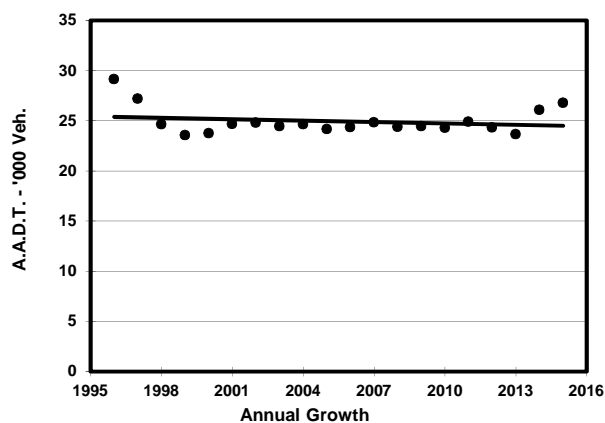
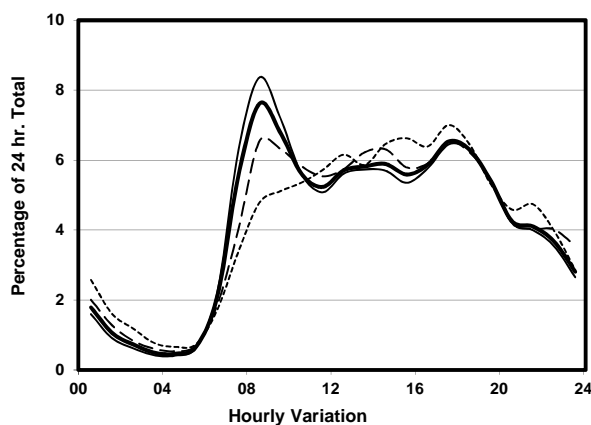
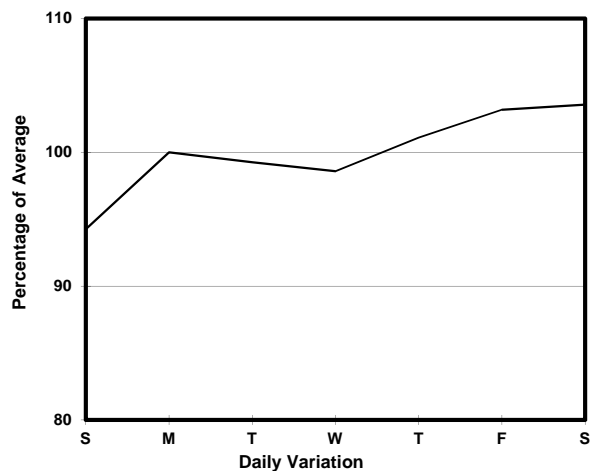
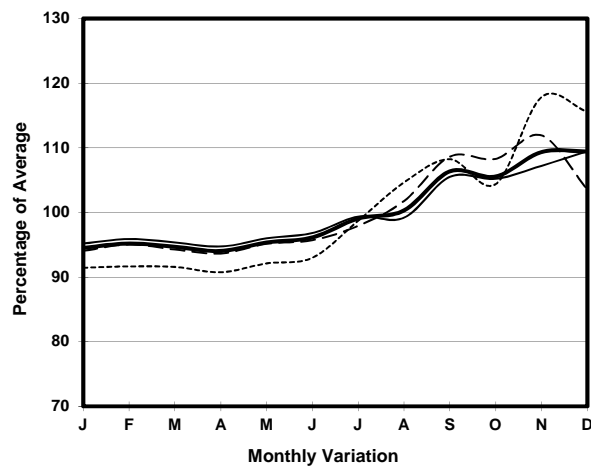
TING KOK RD (from NAM WAN RD to DAI KWAI ST)

CORE STATION
ROAD NETWORK
ROAD TYPE

5006
MAJOR
PRIMARY DISTRIBUTOR



1. TRAFFIC FLOW VARIATION AND GROWTH



2. TRAFFIC CHARACTERISTICS (BY DIRECTION)

Parameter	All - Day	Mon. - Fri.	Sat.	Sun.
EAST BOUND				
A.A.D.T.	12750	12840	13330	12060
R 12 / 24 - %	67.6	68.1	66.6	65.8
R 16 / 24 - %	89.3	90.1	87.6	86.8
AM Peak Hour	0800-0900	0800-0900	0800-0900	0900-1000
One-way flow at AM peak hour	880	980	720	550
T - % (AM)	-	-	-	-
PM Peak Hour	1700-1800	1800-1900	1700-1800	1700-1800
One-way flow at PM peak hour	830	870	890	850
T - % (PM)	-	-	-	-
Prop.of commercial vehicles - 16 hr.	-	-	-	-
WEST BOUND				
A.A.D.T.	14010	14150	14540	13100
R 12 / 24 - %	76.9	78.2	74.9	72.4
R 16 / 24 - %	90.5	90.9	89.5	88.9
AM Peak Hour	0800-0900	0800-0900	0800-0900	0900-1000
One-way flow at AM peak hour	1160	1280	1110	740
T - % (AM)	-	-	-	-
PM Peak Hour	1700-1800	1700-1800	1800-1900	1800-1900
One-way flow at PM peak hour	920	930	940	970
T - % (PM)	-	-	-	-
Prop.of commercial vehicles - 16 hr.	-	-	-	-

3. OTHER INFORMATION AND COMMENT